



STAGE MAKEUP

STEP 1: MOISTURIZER

Moisturizer hydrates and smoothes the skin, resulting in a more even foundation application, and helps the makeup stay on longer.

STEP 2: FOUNDATION

Using your fingers, a brush or sponge, apply foundation in the same shade as your skin. Be sure to blend into your neck and hairline.

STEP 3: POWDER

Using a large, fluffy brush, dust a light coat of powder all over your face to set your foundation.

STEP 4: DEFINE EYEBROWS

Fill in and define eyebrows using an eyebrow pencil, if necessary.

STEP 5: EYESHADOW

Use 2 – 3 brown tones, ranging from light to dark. Apply the lighter shade across the entire eyelid. Apply the darker shade to the outer eyelid. Be sure to blend.

STEP 6: EYELINER

Using black eyeliner, draw a line from the inner to outer corner of the eye, following and staying as close as possible to the lash line. Finish with a small flick extending outwards and upwards.

STEP 7: MASCARA OR FALSE EYELASHES

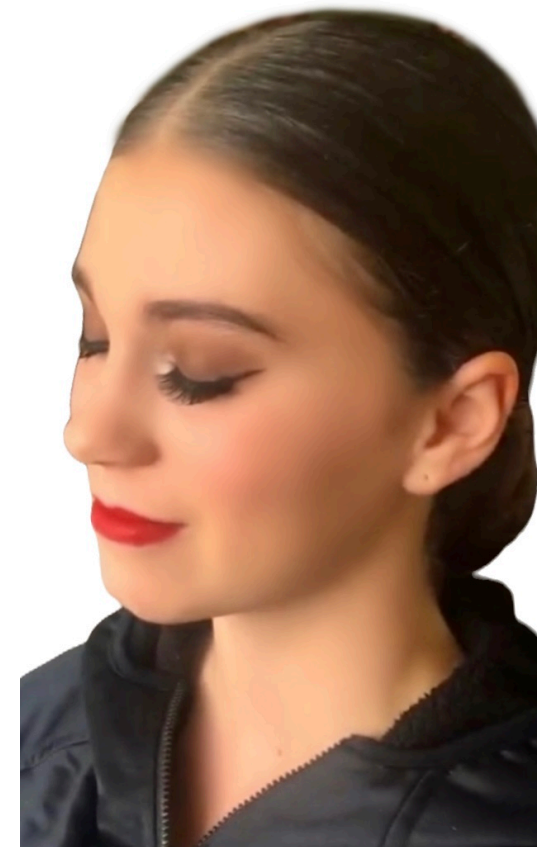
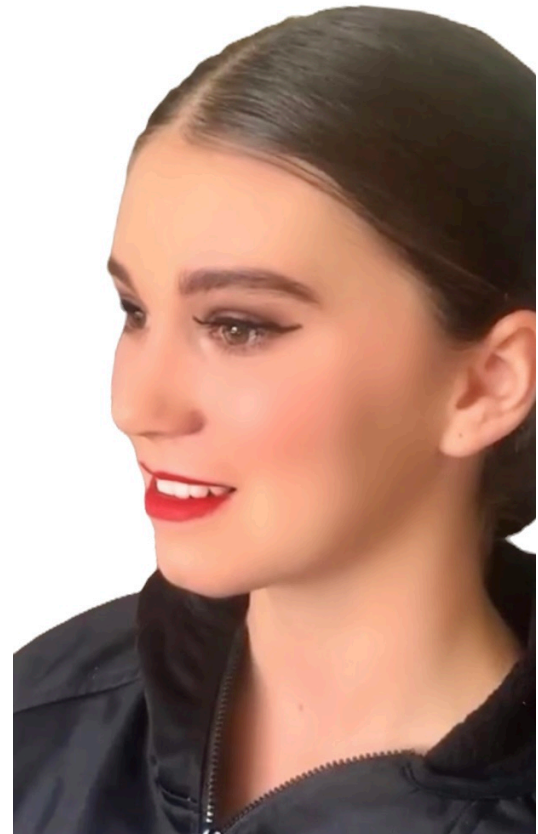
Apply black mascara to eyelashes for students in Baby Ballet through to Grade 2 Ballet. For students in Grade 3 and upwards, apply false eyelashes, followed by mascara.

STEP 8: BLUSH

Apply pink blush to the apples of your cheeks.

STEP 9: LIP STICK

Use a red lip liner to outline the lips (optional), followed by vibrant red lip stick to cover the lips. A clear lip gloss can also be used over the top to add shine (optional).



EXTRA NOTES

Stepping Out Dance World stocks stage makeup which can be used to achieve this look, however you are welcome to use any brand of makeup that you wish.

A video tutorial on how to apply this makeup can be viewed at www.enpointedanceacademysw.com under the 'Other Information' tab.

Because of stage lighting and audience distance, all dancers are required to wear makeup so that they do not appear washed out, formless and shapeless on stage.

Please ensure hair is neat, using hairspray and gel to tame any baby hairs. Ballet buns must be secured with a bun net and bobby pins. A ballet bun tutorial can be viewed at www.enpointedanceacademysw.com under the 'Other Information' tab.

No visible bras or underwear is to be worn under costumes. A body stocking may be worn under some costumes, provided it has been discussed with Miss Tianna first.

No nail polish or additional jewelry is to be worn.

All shoes worn for performances must be clean with no holes or scuff marks. Scuff marks can be painted over with ballet shoe paint available at Stepping Out Dance World.

All ballet items require clean theatrical pink ballet tights with no holes.

All lyrical items require tan $\frac{3}{4}$ tights and tan lyrical shoes.

Tights for contemporary items will be clarified on costume notes.

All tights must be purchased from Stepping Out Dance World.